

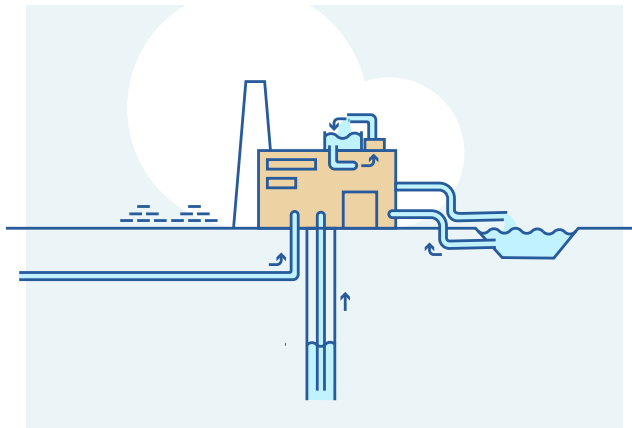
# Water

## OUR ASPIRATION

To use water as efficiently as possible in the manufacturing process and reduce our reliance on mains water supplies.

### KEY STATS

The sector's mains water consumption has reduced by **5%** in 2019 (versus 2018), with non-mains water use increasing by **30%** since 2011.



## THE CHALLENGE

Water is needed in the brick manufacturing process to help shape bricks before they are dried and fired. The brick sector has embraced the recent changes to water abstraction regulations to reduce reliance on potable mains water supplies, and maximise efficiency of water use where it is required.

## WHERE WE ARE NOW

Through improved monitoring and understanding of quarry dewatering, more information is being collected about rainwater collection in clay quarries. This water can then be put to beneficial use in factories, rather than mains water. Overall mains water efficiency per tonne of manufactured product has improved by 5% in 2019.

Proportionally, the quantity of non-mains sourced water has increased by 30% since 2011, and now accounts for 53% of total water consumption by the industry (as demonstrated below):

## WHAT WE PLAN TO DO

- + Monitor progress against the sector's Water Policy.
- + Share best practice on the responsible use of non-mains water through member case studies

